



<https://cloudblue.com>

[Documentation](#) [Help and Support](#) [Release Notes](#) [Archived Release Notes](#)

v32 Release Notes



This article has been generated from the online version of the documentation and might be out of date. Please, make sure to always refer to the online version of the documentation for the up-to-date information.

Auto-generated at January 31, 2026



Release Date: **May 11, 2024**

This release brings new and enhanced features, better scalability, smoother workflows, and a richer user experience on Connect.



1. CloudBlue Connect Platform

1.1 Custom Choice for RTV - Ordering Parameters

For ordering parameters, Connect can now accept and process a custom parameter choice passed by Vendors with purchase requests if they have real-time validation configured.

Unlike parameter dependencies, real-time validation allows Vendors to instantly validate the data in their system and return options, as well as an error message, to customers based on the input field value entered when purchasing a subscription.

For example, customers will see the list of American datacenters if they purchase their subscription in the US marketplace and will see the list of European datacenters if they purchase the same subscription in the European marketplace.



Information

The list of choices returned by the Vendor to Connect with the purchase request will be displayed to the customer in the marketplace and will override static parameters configured in Connect (if any).



1.2 Error Messages Localization - Ordering and Tier Parameters

The error messages returned by a Vendor as a result of the real-time validation of ordering and tier parameters can now be localized.

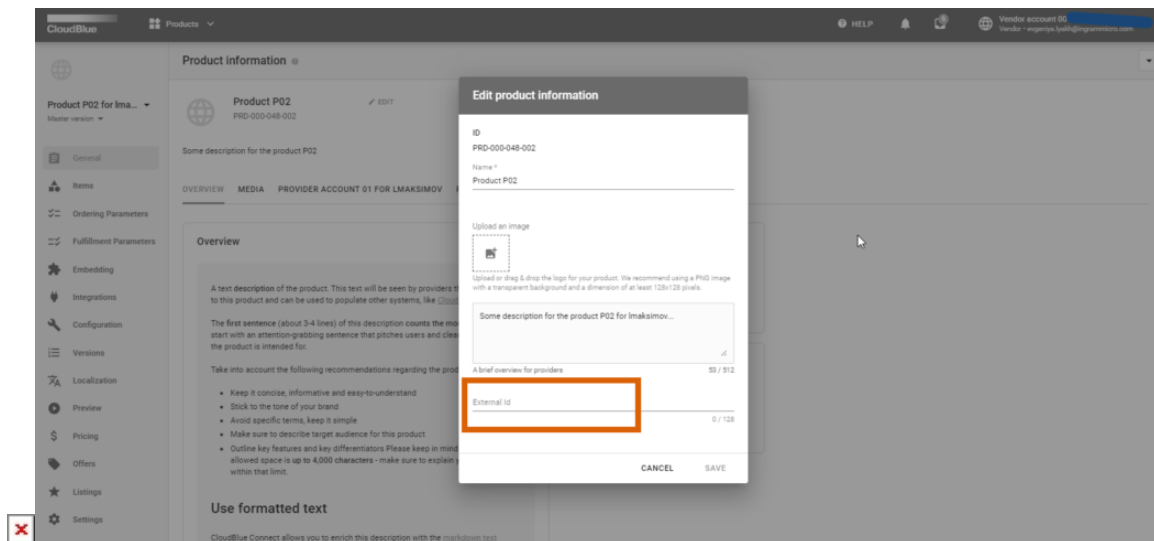
1.3 Configurable Custom fields - Usage

Custom fields in usage files can now be configured to be mandatory.

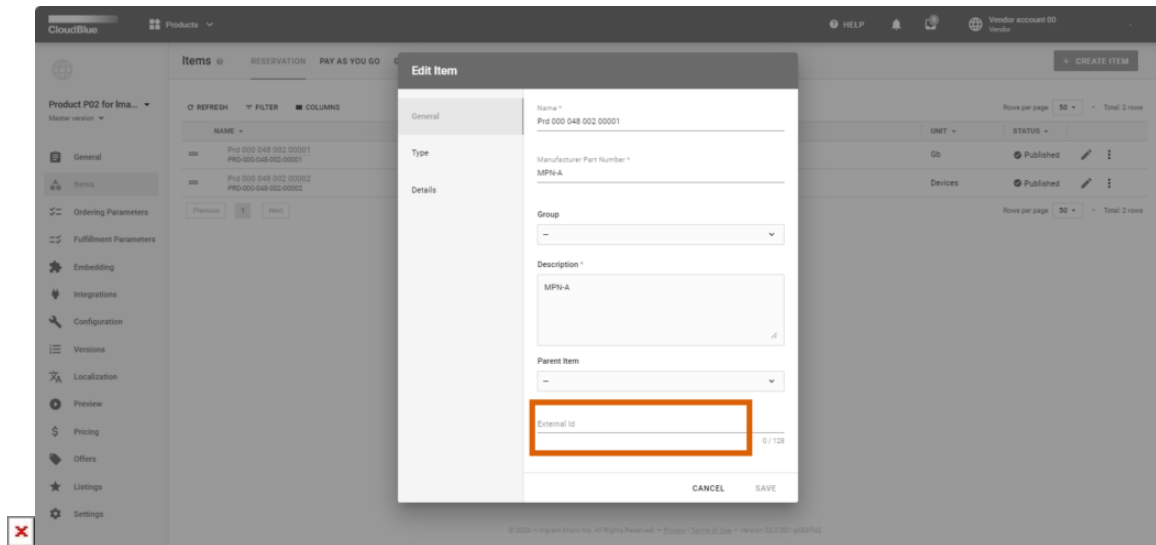
1.4 External IDs - Products and Items

For the products managed in an external system and their product items, Connect now allows vendors to indicate an external ID, unique on the account level.

To configure an external ID for a product, go to the **Product information** page and click the **Edit** button.

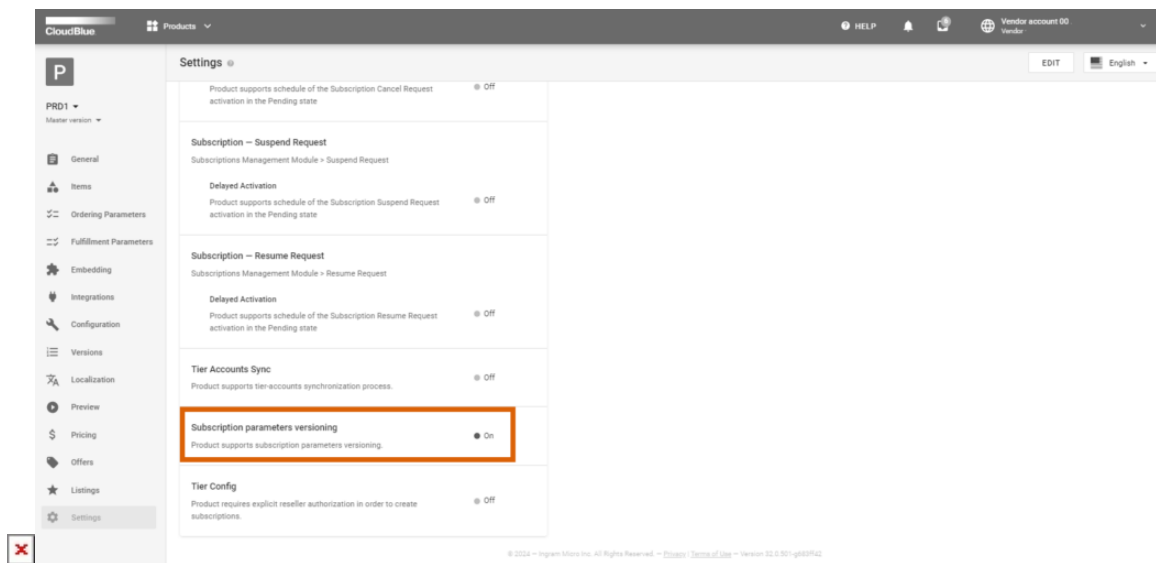


To configure an external ID for a product item, go to **Items** and click the pencil icon next to the item you need.



1.5 Parameters Versioning - Parameters

The new **Subscription parameters versioning** setting now allows vendors to create a new parameter, not affecting the existing product versions.



If this setting is switched on in the product settings, new parameters will only be added to a product version after it is published by the vendor.



Information

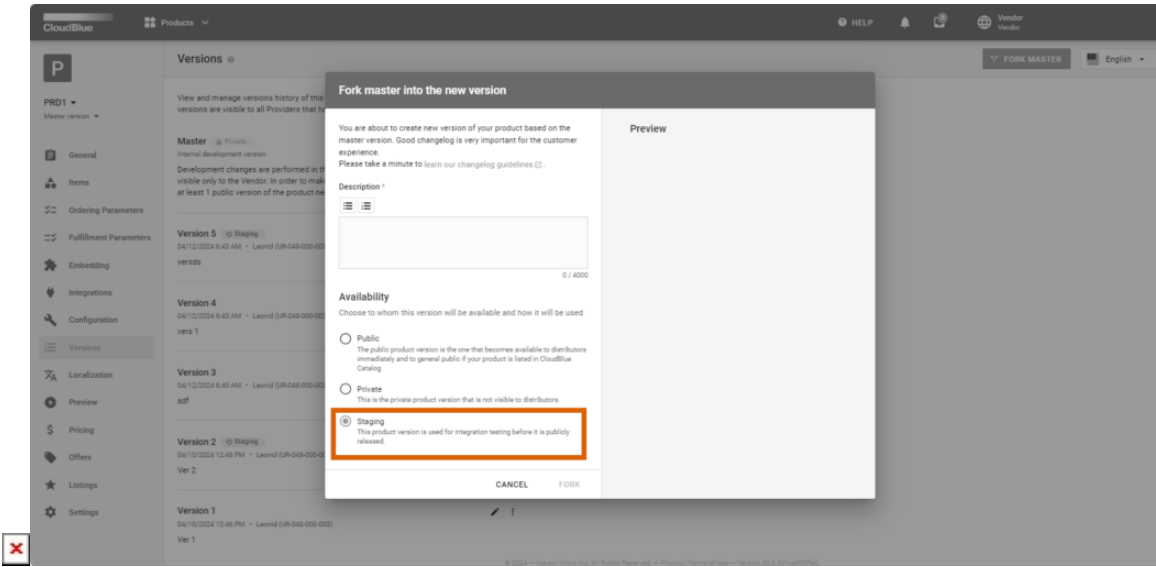
The functionality is available for ordering and fulfillment parameters only and all the scopes, that is, subscription, tier 1, and tier 2. The functionality is not available for configuration



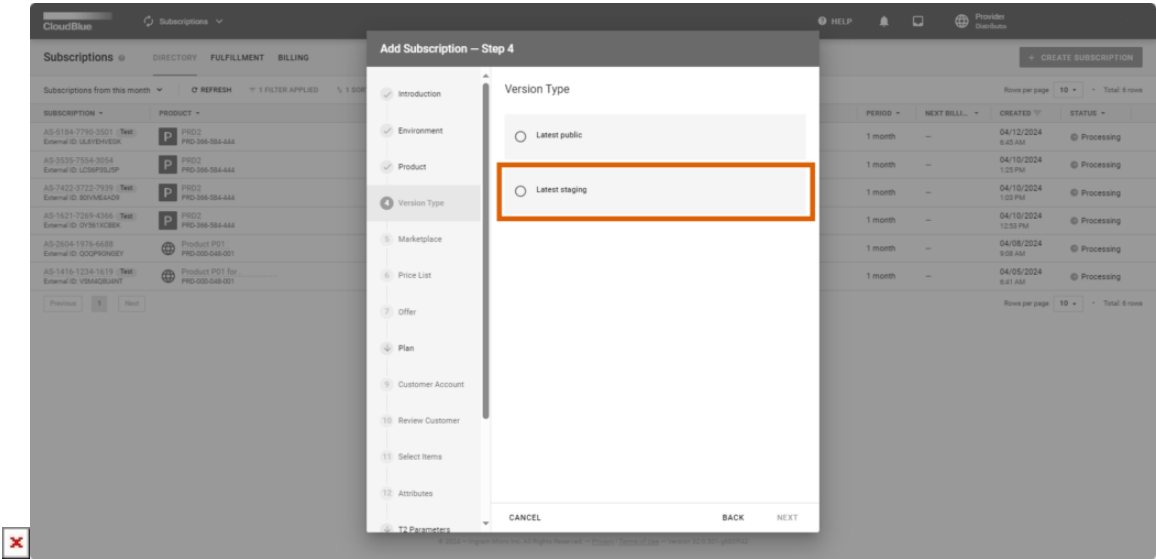
parameters.

1.6 Staging version - Products

Vendors can now fork master into a new **Staging** version to test the product integration without affecting the production flow:



Distributors can create a test subscription then either based on the latest production or staging version:



Information



Distributors can choose whether to create a subscription based on the latest staging or production version only for the test environment. For the production environment, the version type choice is not available.