

[Documentation](#) → [Modules](#) → [Subscriptions](#) →

Subscription Creation



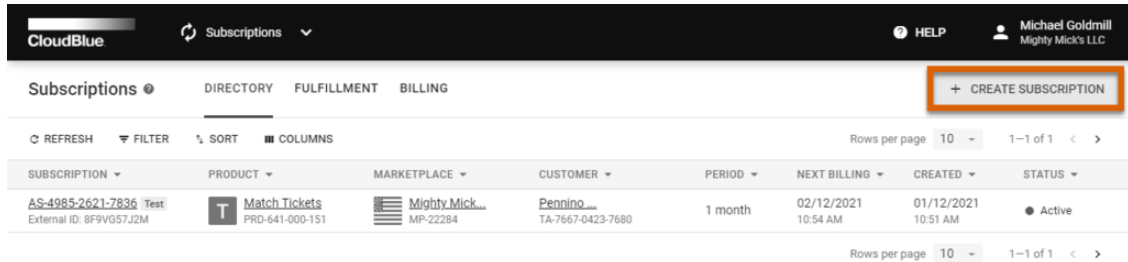
This article has been generated from the online version of the documentation and might be out of date. Please, make sure to always refer to the online version of the documentation for the up-to-date information.

Auto-generated at April 11, 2021

Overview

In general, subscriptions and fulfillment requests are created automatically by specified hubs via the Connect API. However, it is also possible to create subscriptions manually to test out product ordering procedures and to preview a product. The following describes how to manually create a subscription on the Connect platform.

Create a new subscription via a subscription creation wizard from the **Subscriptions** module.



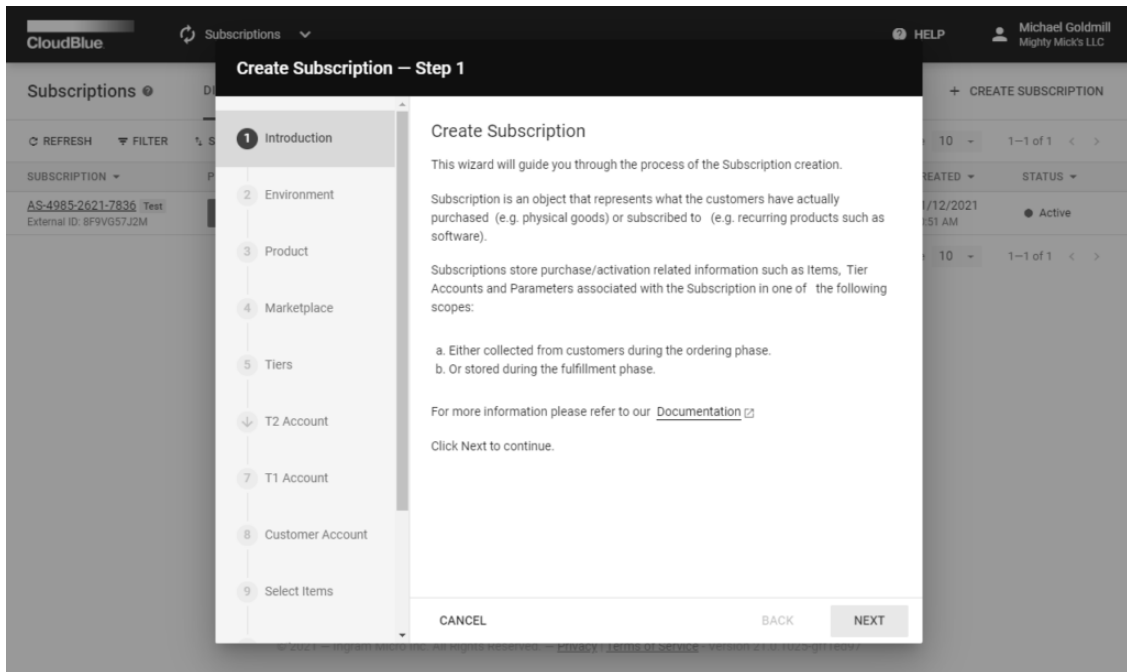
The screenshot shows the CloudBlue Subscriptions module interface. The top navigation bar includes the CloudBlue logo, a 'Subscriptions' dropdown menu, a 'HELP' icon, and the user profile 'Michael Goldmill, Mighty Mick's LLC'. Below the navigation bar, there are tabs for 'Subscriptions', 'DIRECTORY', 'FULFILLMENT', and 'BILLING'. A '+ CREATE SUBSCRIPTION' button is highlighted with an orange box. Below the tabs, there are controls for 'REFRESH', 'FILTER', 'SORT', and 'COLUMNS'. The main table displays a list of subscriptions with columns for 'SUBSCRIPTION', 'PRODUCT', 'MARKETPLACE', 'CUSTOMER', 'PERIOD', 'NEXT BILLING', 'CREATED', and 'STATUS'. The first row shows a subscription with ID 'AS-4985-2621-7836', product 'Match Tickets', marketplace 'Mighty Mick...', customer 'Pennino...', period '1 month', next billing '02/12/2021 10:54 AM', created '01/12/2021 10:51 AM', and status 'Active'. The bottom of the interface shows 'Rows per page 10' and '1-1 of 1'.

© 2021 – Ingram Micro Inc. All Rights Reserved. – [Privacy](#) | [Terms of Service](#) - Version 21.0.1019-g3390408

Click the **Create Subscription** button to launch the wizard. Follow the steps below to successfully configure a new subscription.

1. Introduction

The wizard will provide an introduction that explains the subscription concept.

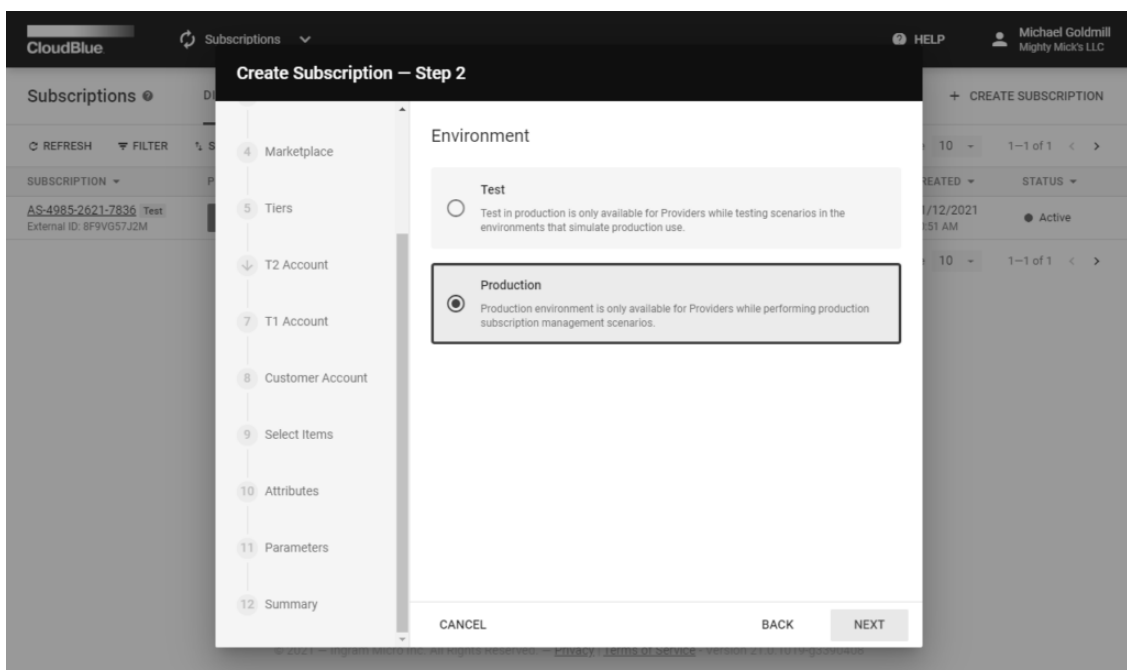


Click **Next** to continue.

2. Environment

Select one of the available environments:

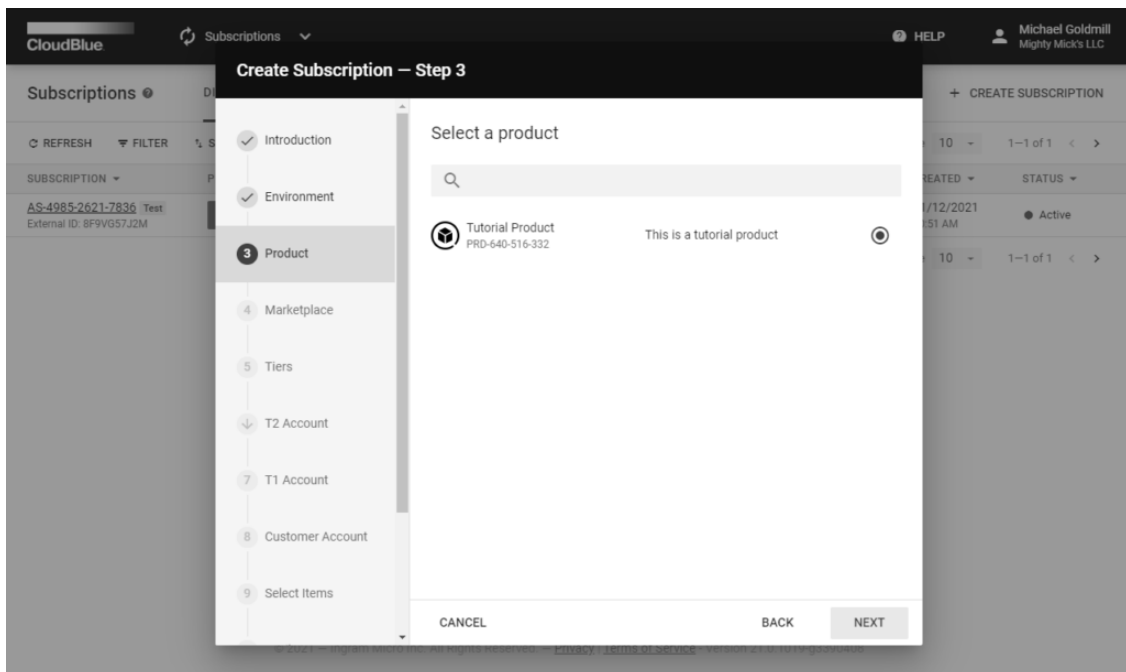
- **Test:** Choose this environment to simulate production use.
- **Vendor internal test:** Select this preview environment for internal Vendor testing scenarios (available for Vendors only).
- **Production:** This environment is used to perform production subscription management scenarios.



Click **Next** to continue.

3. Product

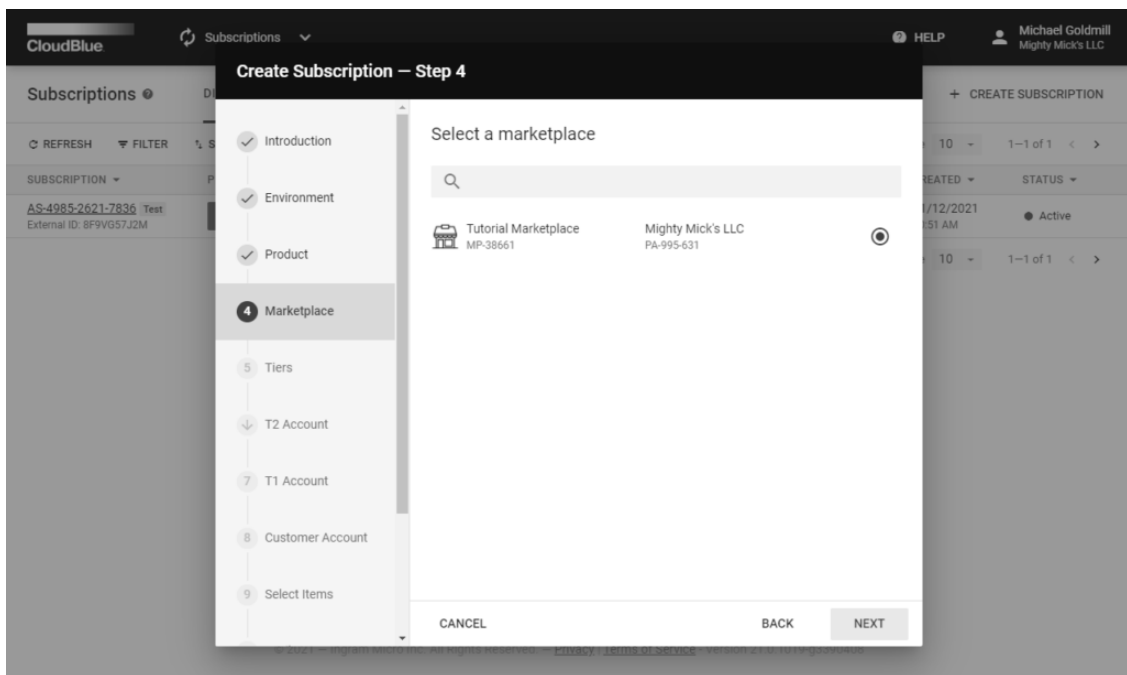
Select your product in the following form.



Click **Next** to continue.

4. Marketplace

Choose a marketplace from the list.

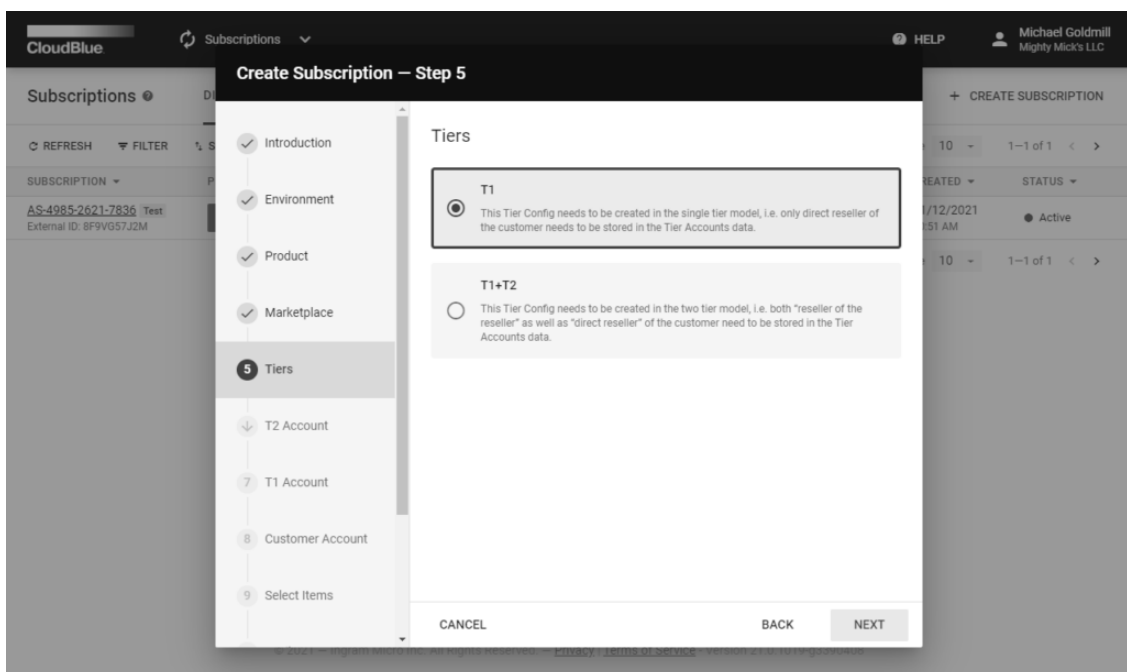


Click **Next** to continue.

5. Tiers

Specify the number of reseller tiers that take part in the sales chain:

- **T1**: Select this option to configure only a direct reseller of your customer.
- **T1+T2**: Configure a direct reseller and a “reseller of the reseller” with this option.



Click **Next** to continue.

6. T2 Account

The T2 Account configuration is available in case the T1+T2 option is previously selected. The process of the T2 account configuration is similar to the T1 account configuration. Refer to the following step for more details.

7. T1 Account

Click on the **New** field to configure a new account. Thereafter, the system requires to provide account data. Click the **Randomize** button to fill out all required fields automatically.

The screenshot shows the 'Create Subscription - Step 7' interface in CloudBlue. The 'T1 Account' step is selected in the left sidebar. A dropdown menu for 'Choose Tier 1 Reseller Account *' is open, showing 'New' as the selected option. Below this, the 'Account Data' section is visible, featuring a 'RANDOMIZE' button and a 'CLEAR' button. The 'General' section contains fields for Company (Wintheiser - Turcotte), Organization Name, External ID (12934), External UUID (a27cf885-34a7-49db-8860-e811c73fbei), Tax ID (C959LV530G), and Taxation Identification number. The interface also shows a 'SUBSCRIPTIONS' sidebar on the left and a 'CREATE SUBSCRIPTION' sidebar on the right.



Information

Randomized account data is generated based on a country that is randomly selected from the list of countries associated with a specified marketplace.

Click **Next** to continue.

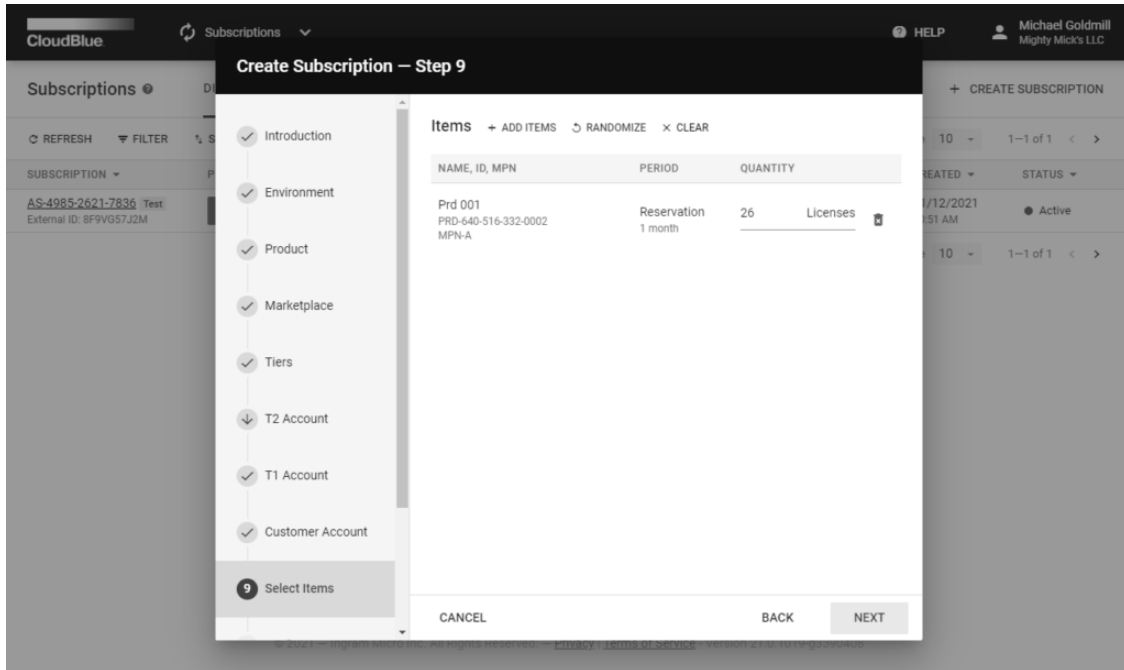
8. Customer Account

The process of the customer account configuration is similar to the T1 account configuration. Refer to the previous step for more details.

Create a new customer account and randomize customer account data. Thereafter, click the **Next** button to continue.

9. Select Items

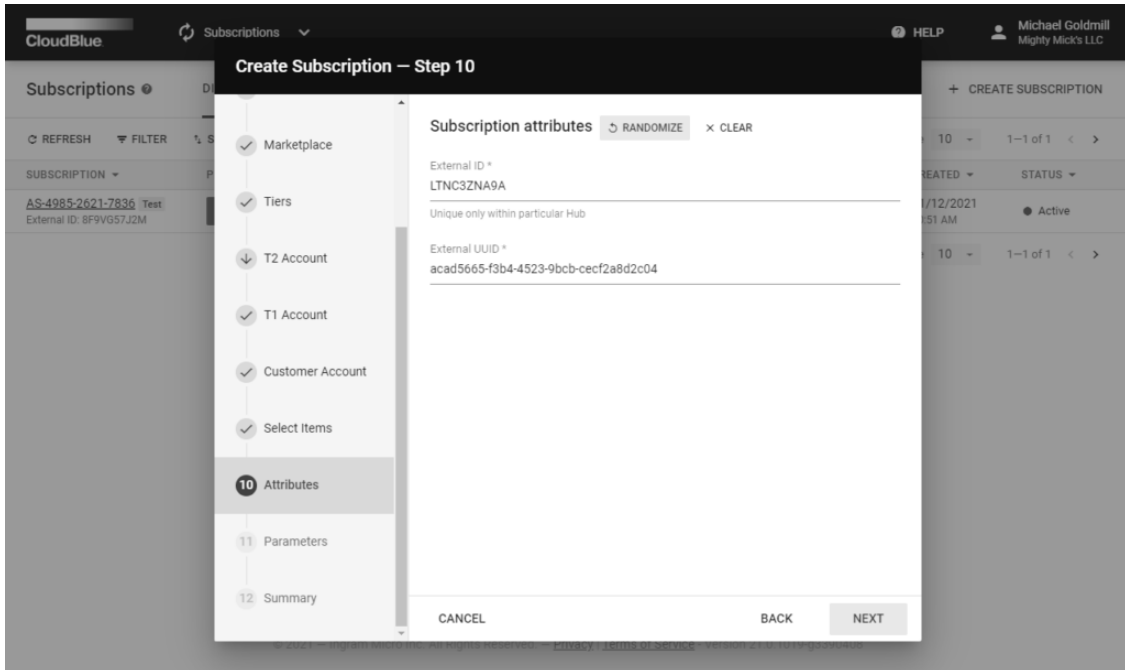
The system will provide random item quantity in the following form. Edit quantity, add or change provided items by clicking corresponding buttons on the interface.



Click the **Next** button to continue.

10. Attributes

The system will provide random External ID and External UUID attributes. Edit or randomize the provided subscription attributes by using the corresponding buttons.



Click **Next** to continue.

11. Parameters

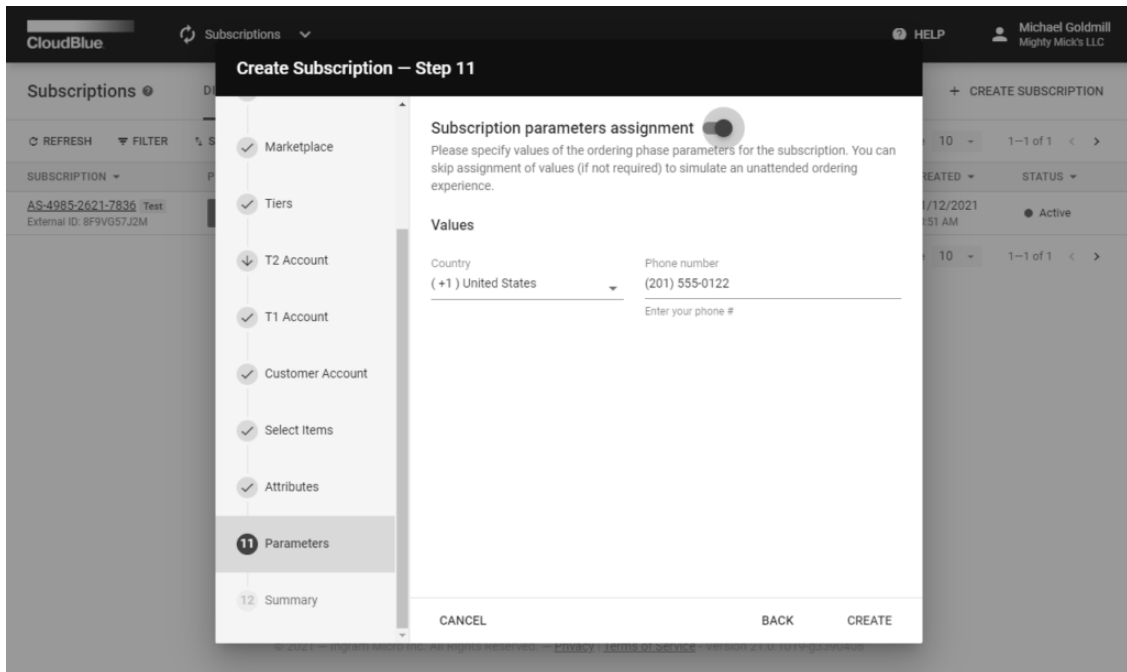
Provide your subscription parameters in the following form.



Information

Specifying **Subscription Parameters** is an optional step that is available in case a Vendor created at least one ordering phase parameter. Provided options vary depending on the created parameter type.

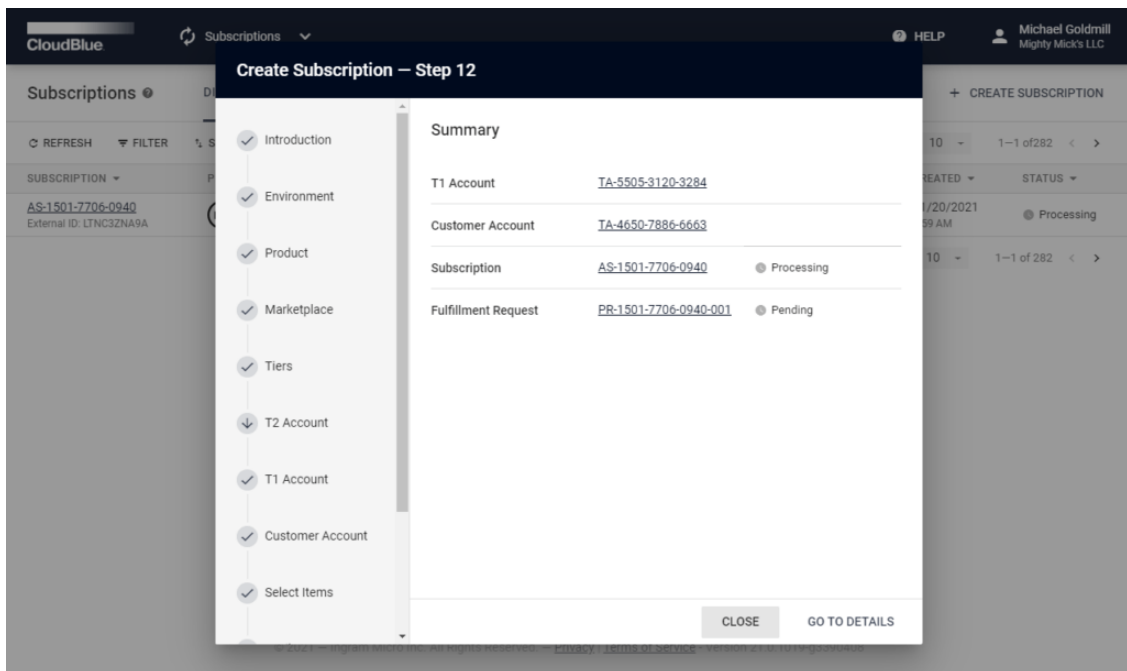
Enable or disable the parameter by using the corresponding switch.



Click the **Create** button to finalize your subscription creation.

12. Summary

The wizard will provide your created subscription summary. Review the list of objects created during this process:



- **T1 Account:** ID of a reseller that sells the product.
- **Customer Account:** ID of a customer that ordered the product.

- **Subscription:** ID of a new created subscription.
- **Fulfillment Request:** ID of a pending request for the order fulfillment.

The summary list also provide clickable links that redirect to a corresponding object in a new window.

Click the **Go to Details** button to access your created subscription details screen. Otherwise, click **Close** to close the summary and the wizard.