

[Documentation](#) → [Modules](#) → [Subscriptions](#) → [Subscriptions Interface](#) →

Subscription Creation



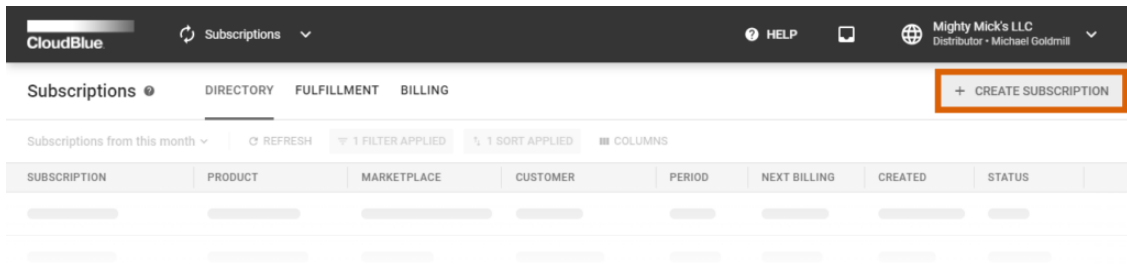
This article has been generated from the online version of the documentation and might be out of date. Please, make sure to always refer to the online version of the documentation for the up-to-date information.

Auto-generated at August 9, 2022

Overview

In general, subscriptions and fulfillment requests are created automatically by specified hubs via the Connect API. However, it is also possible to create subscriptions manually to test out product ordering procedures and to preview a product. The following describes how to manually create a subscription on the Connect platform.

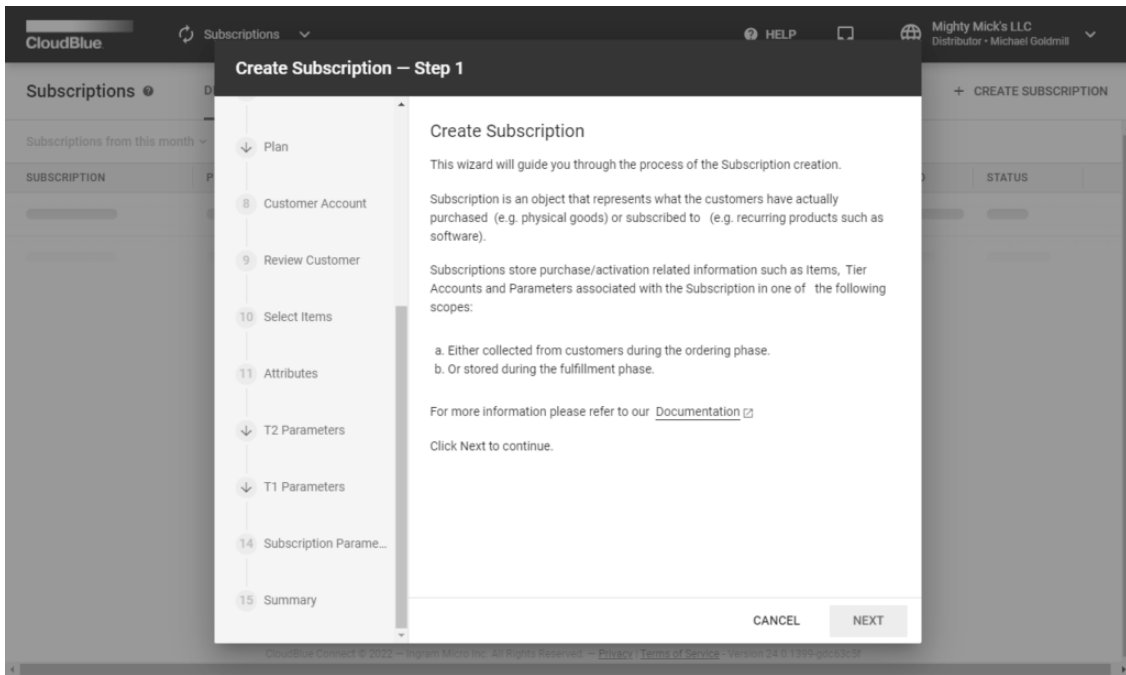
Create a new subscription via a subscription creation wizard from the **Subscriptions** module.



Click the **Create Subscription** button to launch the wizard. Follow the steps below to successfully configure a new subscription.

1. Introduction

The wizard will provide an introduction that explains the subscription concept.

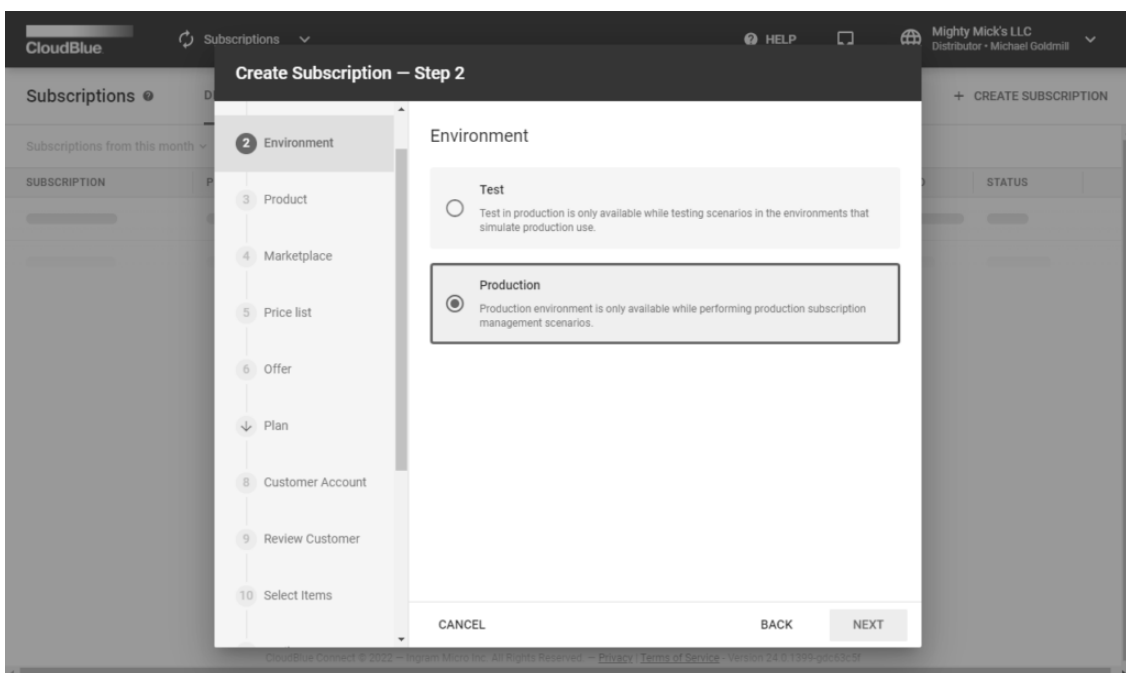


Click **Next** to continue.

2. Environment

Select one of the available environments:

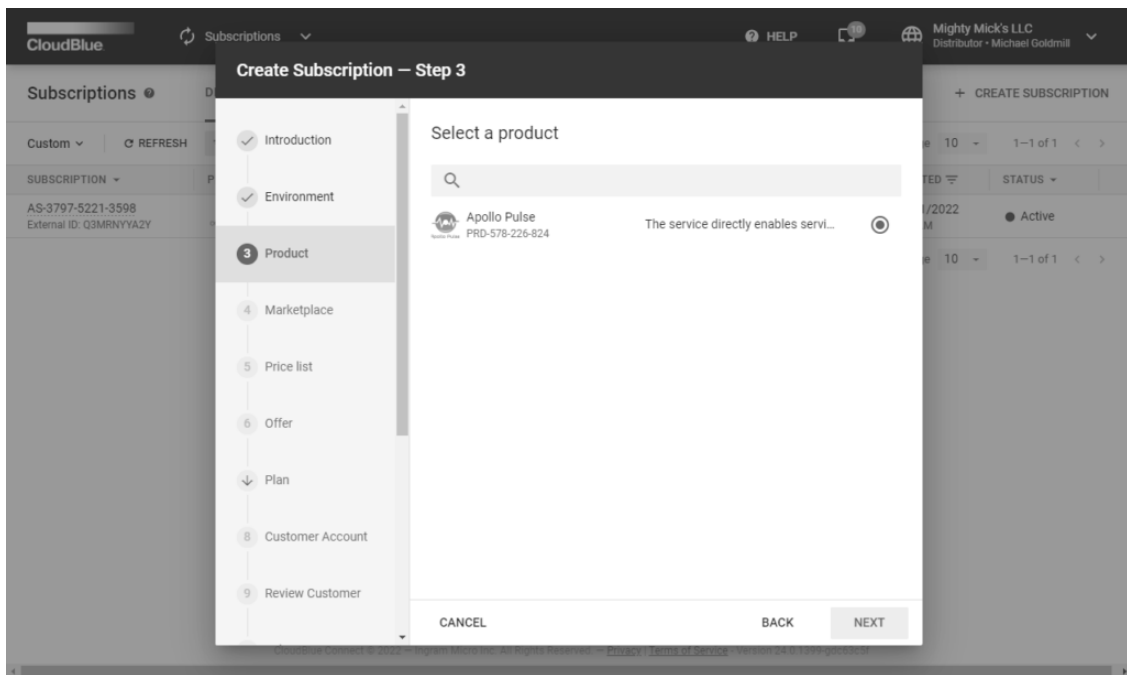
- **Test:** Choose this environment to simulate production use.
- **Vendor internal test:** Select this preview environment for internal Vendor testing scenarios (available for Vendors only).
- **Production:** This environment is used to perform production subscription management scenarios.



Click **Next** to continue.

3. Product

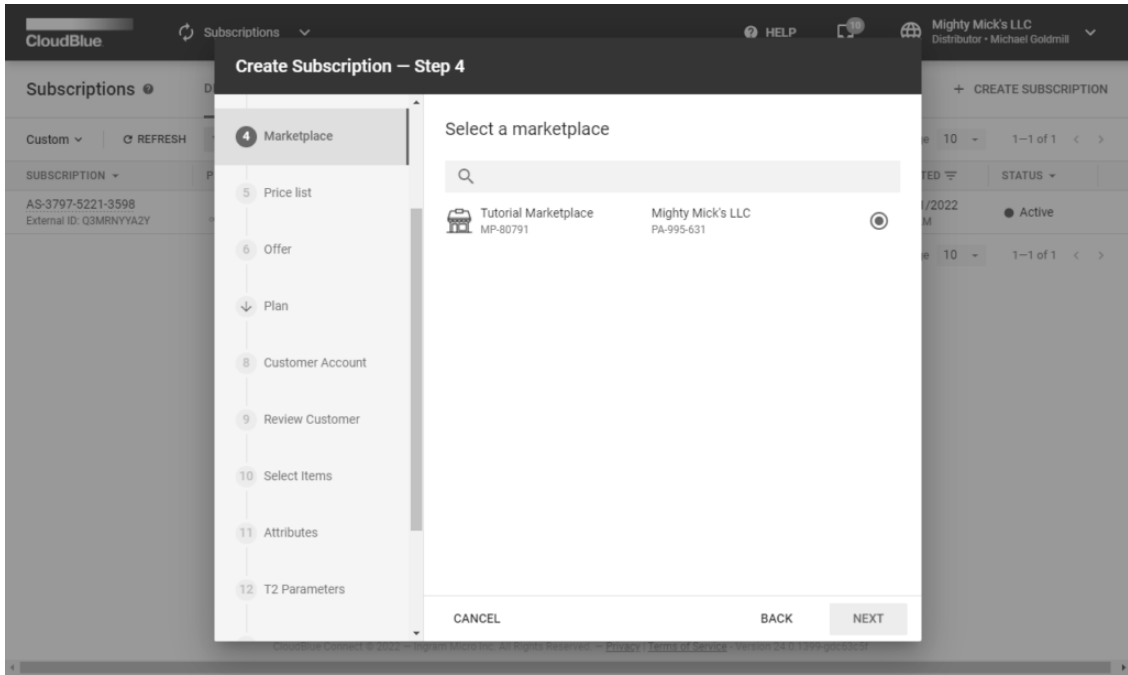
Select your product from the provided list.



In case the list is empty, make sure that your required is defined and successfully listed via the CloudBlue Connect platform.

4. Marketplace

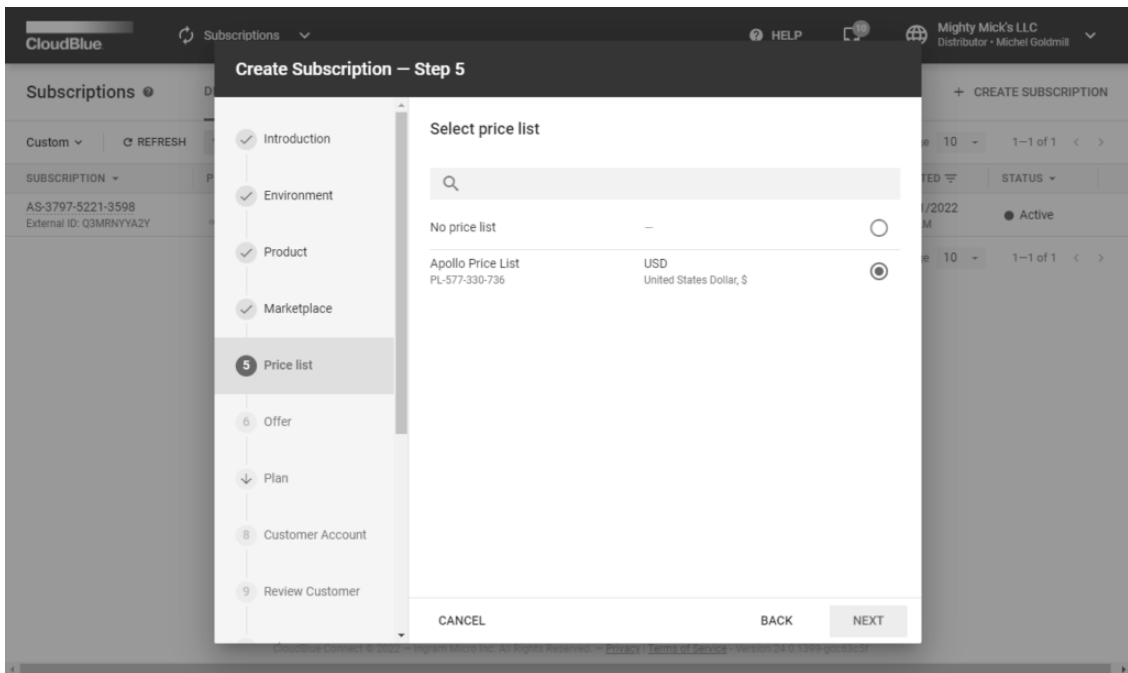
Choose a marketplace that will be used to create a subscription.



Click **Next** to continue.

5. Price List

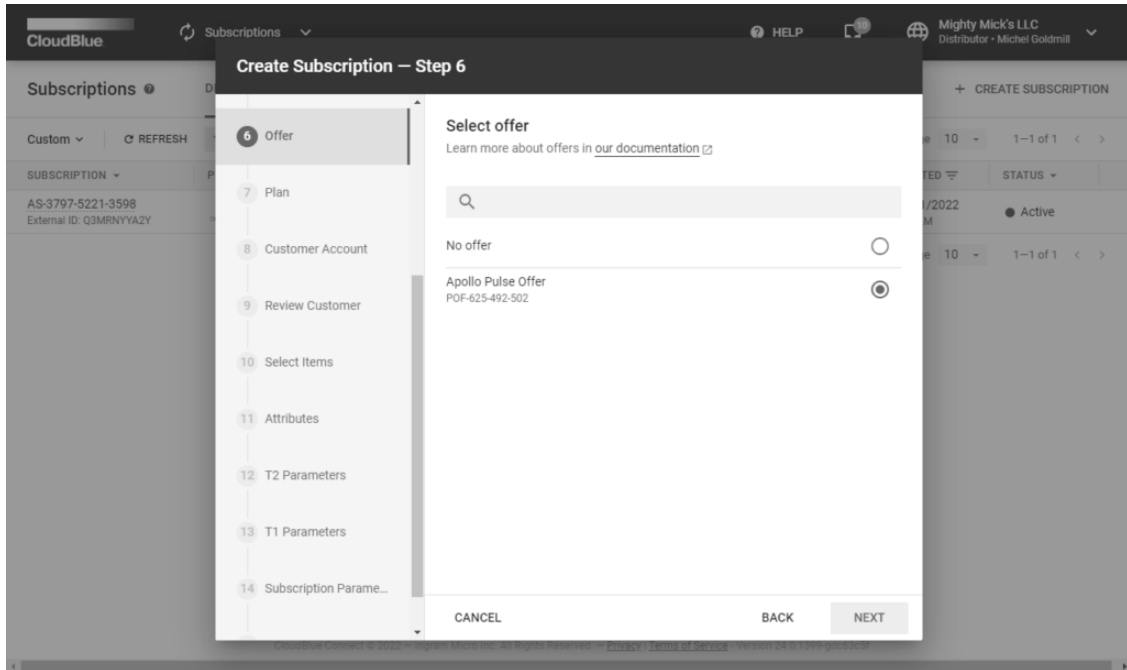
The wizard prompts you to choose a price list for your subscription once the Vendor created such a list and linked it to the defined product on Connect. Note that it is possible to select price list objects that have the same currency as specified within your selected marketplace.



Refer to the Pricing module documentation for more details.

6. Offer

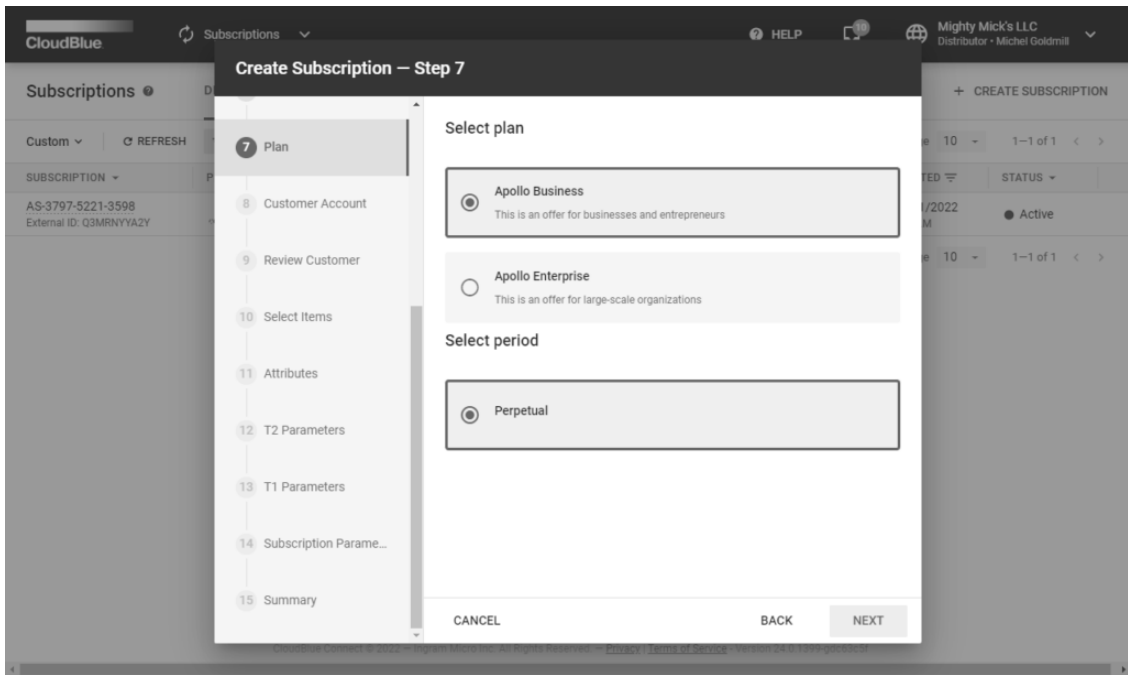
In case the Vendor successfully created offers for their defined product on the platform, the wizard allows specifying an offer for your new subscription.



Refer to the Offer module documentation for more details.

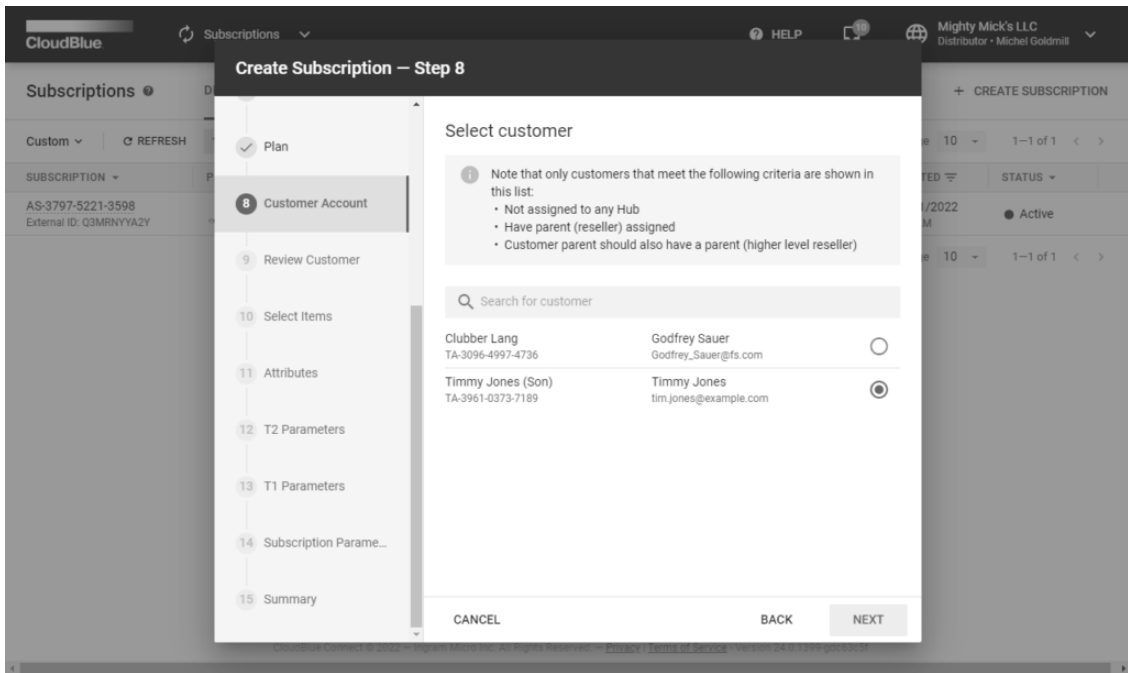
7. Plan

In case an offer is selected, the wizard prompts you to continue the offer configuration. Namely, the wizard prompts you to specify a plan and a period for your new subscription.



8. Customer Account

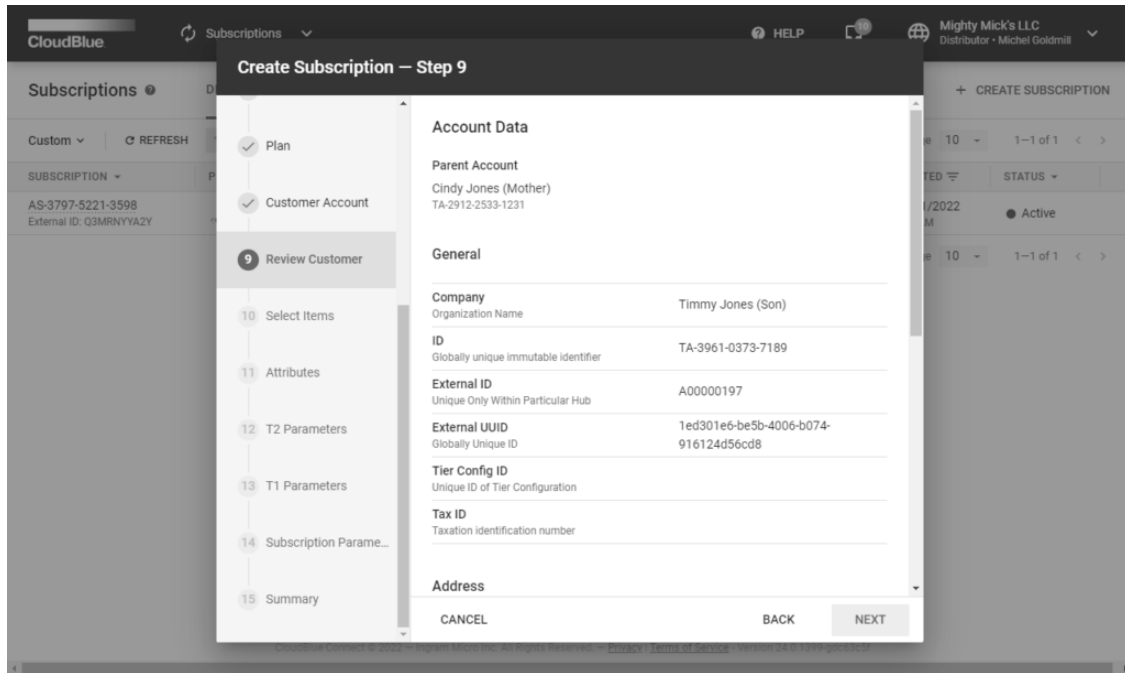
Select a customer account for your subscription. Specifically, the system requires to create a customer account before selecting this account by using the wizard. In case it is required to create a test subscription, the wizard allows selecting a test account from the list.



Refer to the Customers module documentation for more details.

9. Review Customer

The wizard displays the data of your previously selected customer account. This include parent account, information, general data (such as company, external id, etc.), address, contact information, and more.

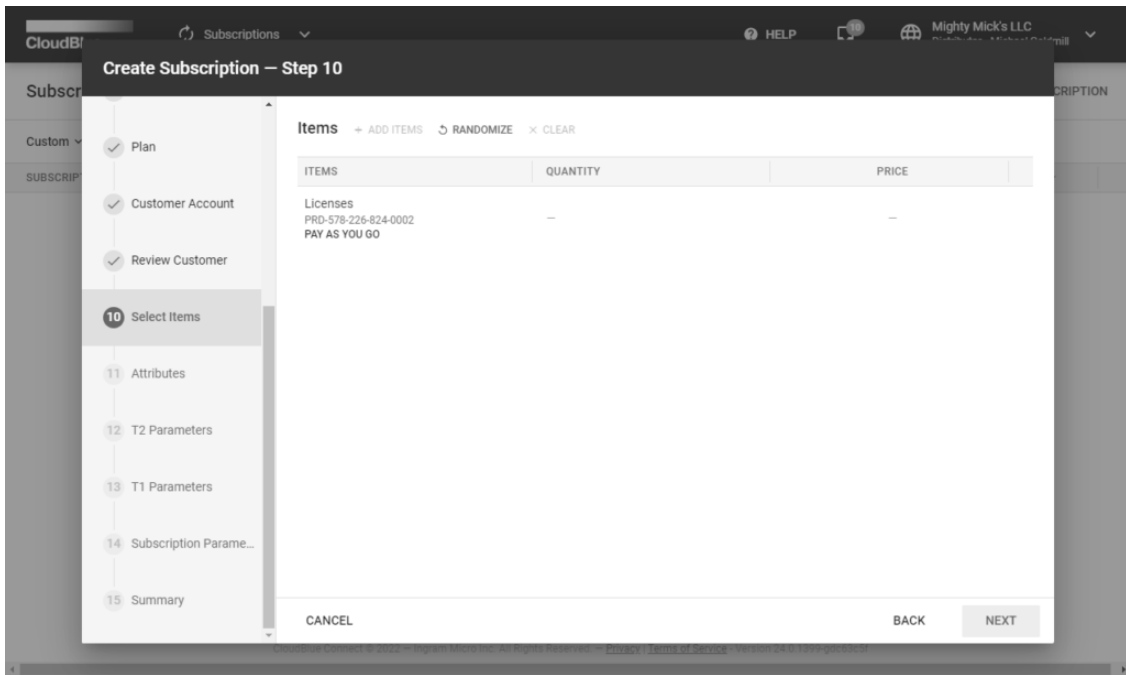


Account Data	
Parent Account	
Cindy Jones (Mother)	TA-2912-2533-1231
General	
Company	Timmy Jones (Son)
Organization Name	
ID	TA-3961-0373-7189
Globally unique immutable identifier	
External ID	A00000197
Unique Only Within Particular Hub	
External UUID	1ed301e6-be5b-4006-b074-916124d56cd8
Globally Unique ID	
Tier Config ID	
Unique ID of Tier Configuration	
Tax ID	
Taxation identification number	
Address	

Make sure that customer data is correct and click **Next**.

10. Select Items

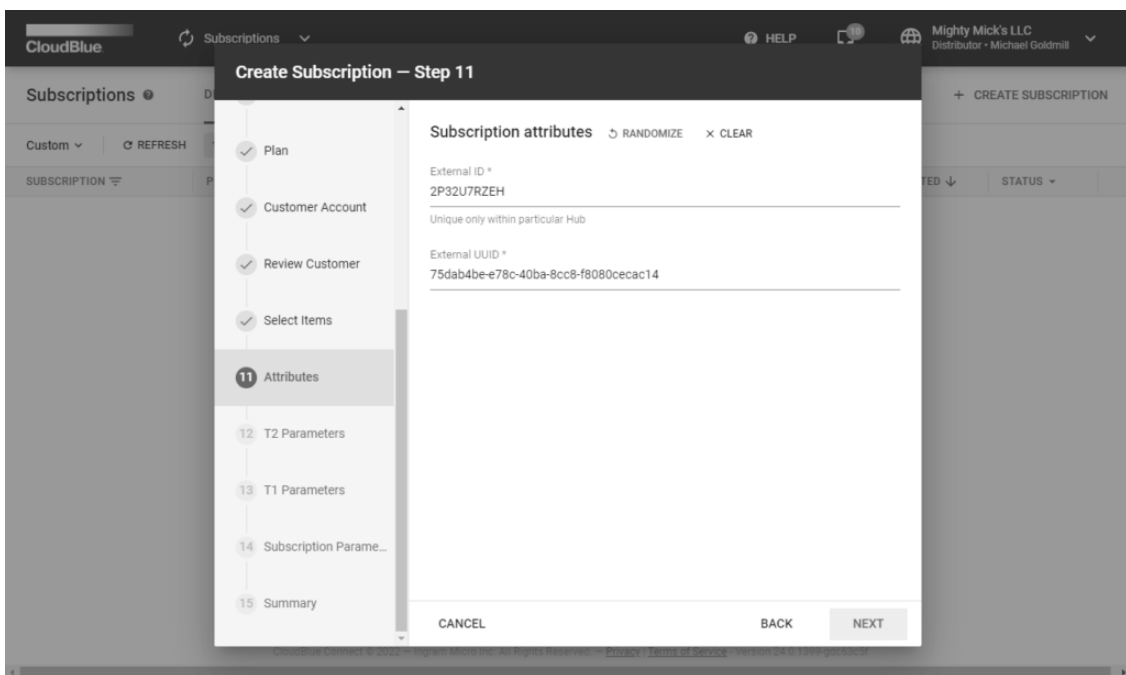
The system will provide random item quantity in the following form. Edit quantity, add or change provided items by clicking corresponding buttons on the interface.



Click the **Next** button to continue.

11. Attributes

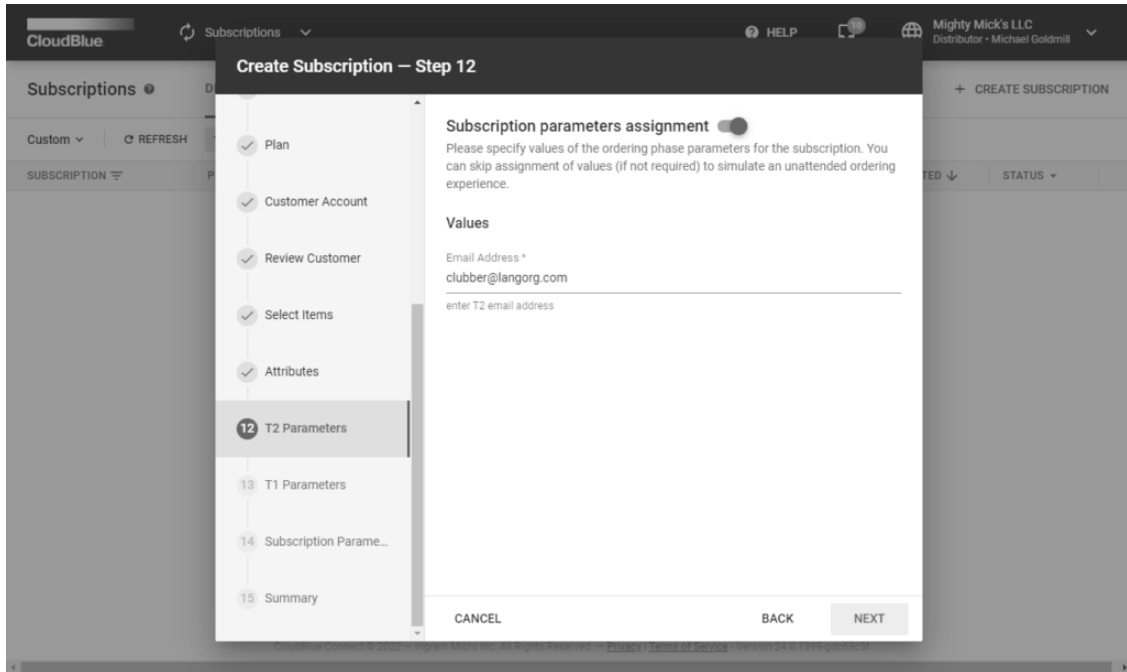
The system will provide random External ID and External UUID attributes. Edit or randomize the provided subscription attributes by using the corresponding buttons.



Click **Next** to continue.

12. T2 Parameters

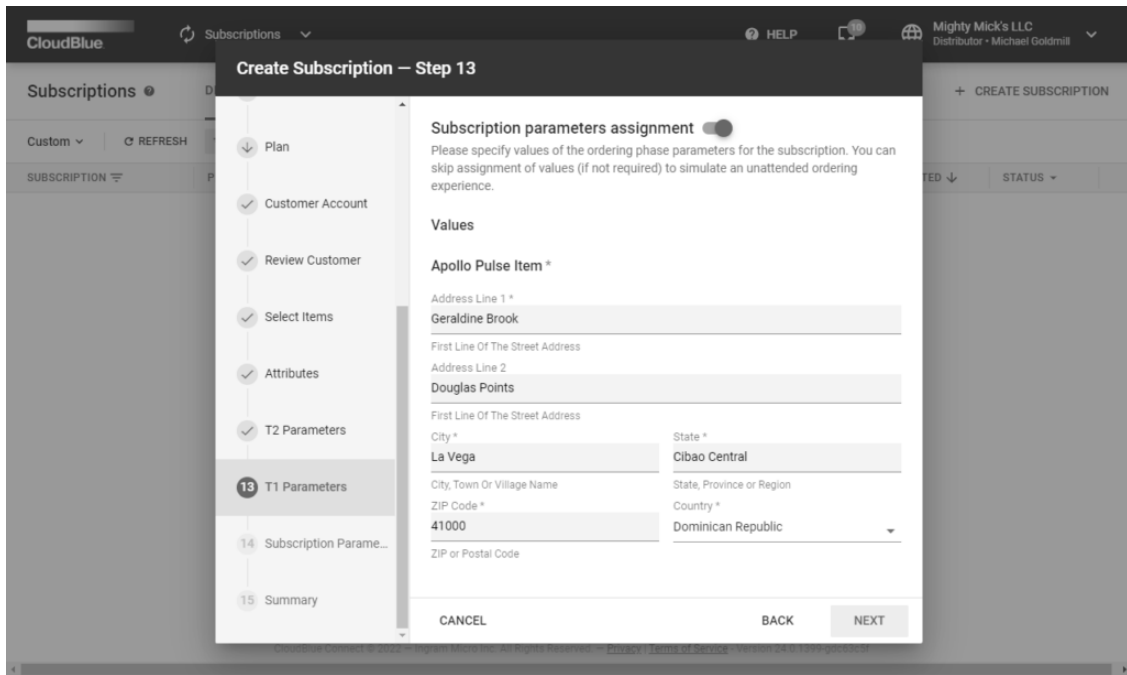
The T2 parameter configuration is available in case your selected product includes a T2 ordering parameter. Provided options vary depending on the created parameter type. The system allows enabling or disabling parameters assignment by using the corresponding switch.



Refer to the Parameters documentation for more information on T2 and T1 parameters.

13. T1 Parameters

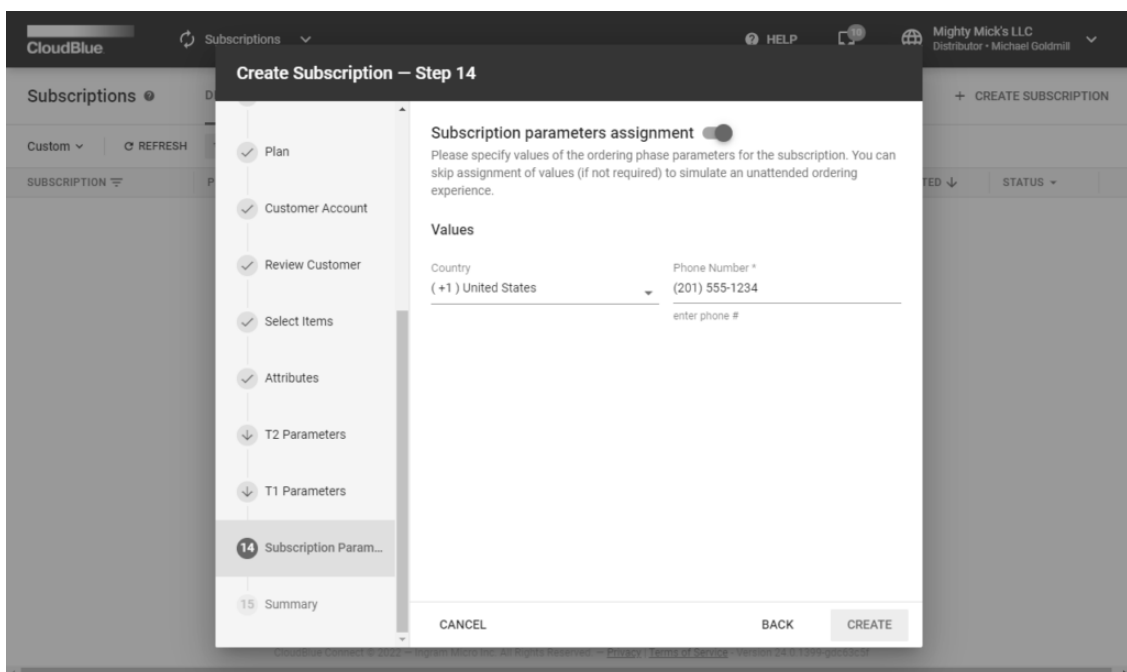
The wizard prompts to specify T1 parameter configuration in case it is applicable for your subscription. The system also allows enabling or disabling parameters assignment by using the corresponding switch.



Generate random data by clicking on one of the provided fields. Randomized account data is generated based on a country that is randomly selected from the list of countries associated with a specified marketplace.

14. Subscription Parameters

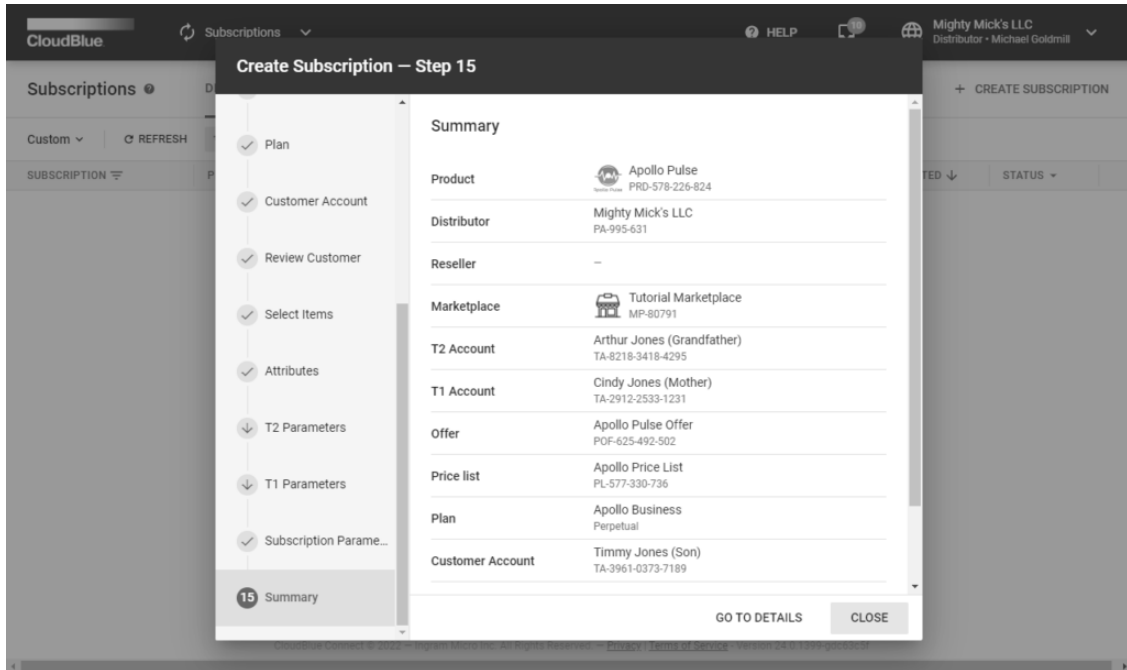
Provide your subscription parameters in the following form. Specifying **Subscription Parameters** is an optional step that is available in case a Vendor created at least one ordering phase parameter. Provided options also vary depending on the created parameter type.



Enable or disable the parameter by using the corresponding switch. Click the **Create** button to finalize your subscription creation.

15. Summary

The wizard will provide your created subscription summary. Review the list of objects created during this process:



The summary list also provide clickable links that redirect to a corresponding object in a new window.

Click the **Go to Details** button to access your created subscription details screen. Otherwise, click **Close** to close the summary and the wizard.